

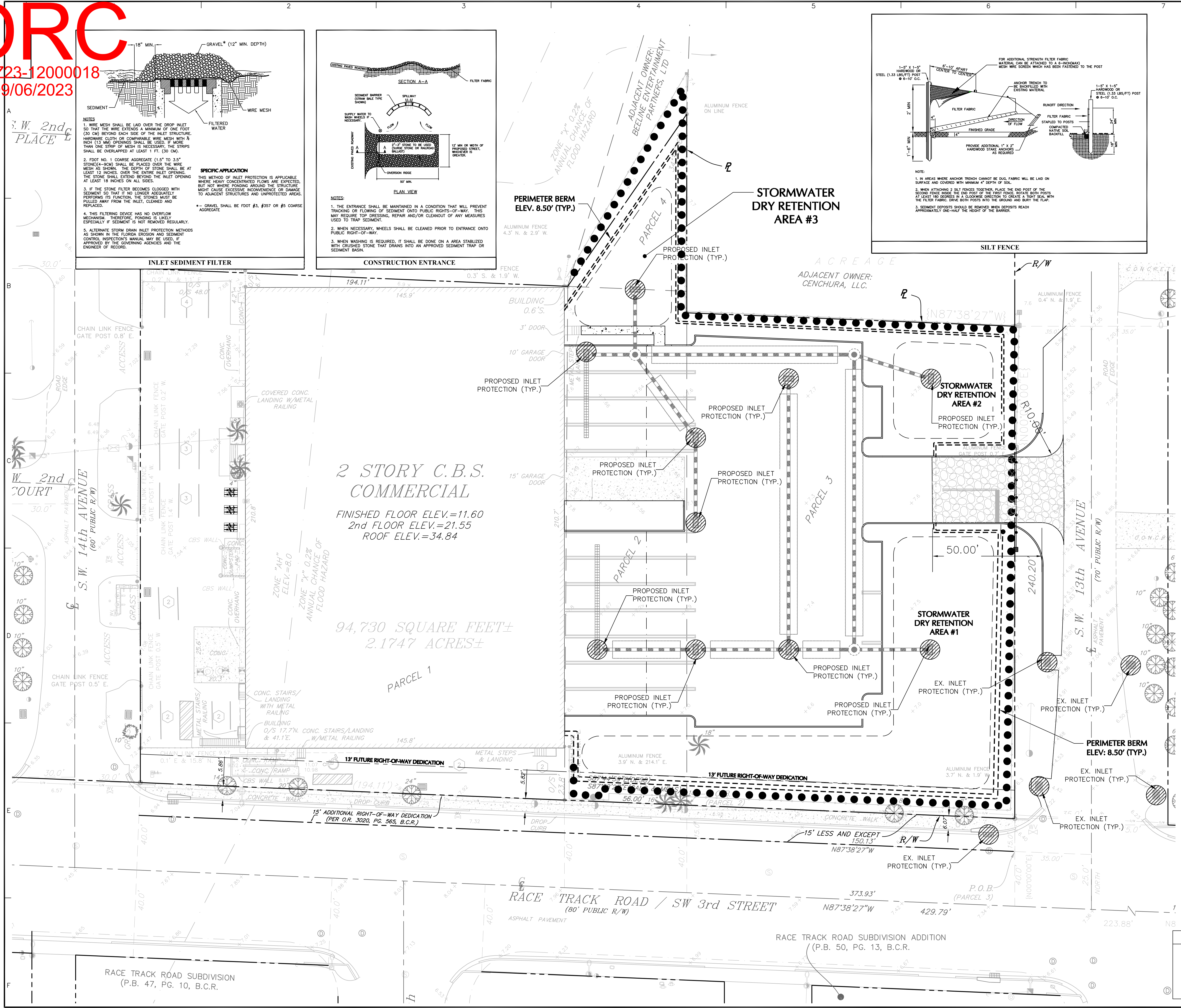
3. W. 2nd
PLACE E

W. 2nd
COURT

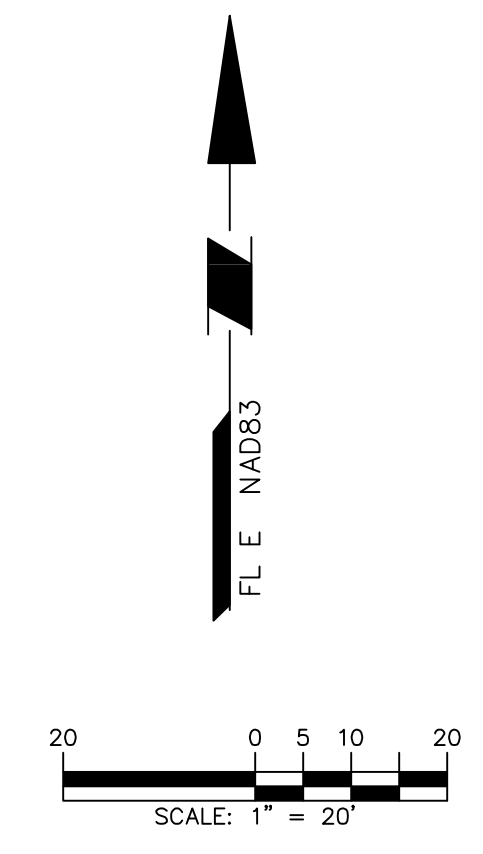
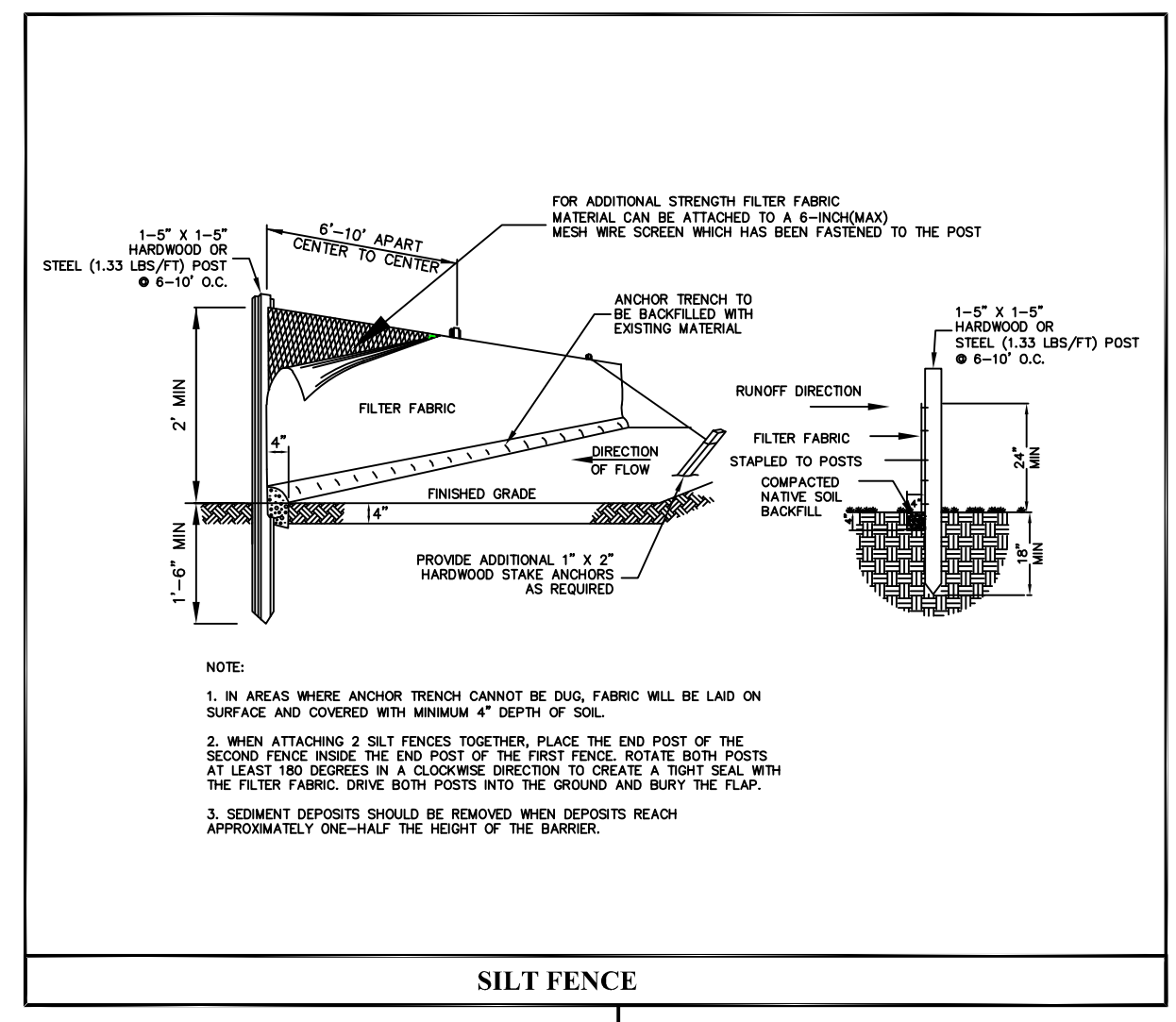
S. W. 14th AVENUE
(60' PUBLIC R/W)

RACE TRACK ROAD / SW 3rd STREET
(80' PUBLIC R/W)

RACE TRACK ROAD SUBDIVISION
(P.B. 47, PG. 10, B.C.R.)



- EROSION AND SEDIMENT CONTROL NOTES:**
- THE CONTRACTOR SHALL INSTALL AND MAINTAIN SILT FENCE, IN ACCORDANCE WITH FLORIDA STORMWATER EROSION AND SEDIMENTATION CONTROL MANUAL, AROUND THE PERIMETER OF ALL EARTH DISTURBANCES. SILT FENCES SHALL REMAIN IN PLACE UNTIL PERMANENT STABILIZATION OF DISTURBED AREAS IS COMPLETED.
 - THE CONTRACTOR SHALL SEED AND MULCH OR SOD SWALES, PONDS, AND/OR GREEN AREAS IMMEDIATELY AFTER CONSTRUCTION OF THESE AREAS ARE COMPLETED.
 - THE CONTRACTOR SHALL PROVIDE SILTATION REDUCTION DEVICES FOR THE DISCHARGE FROM ANY DEWATERING PROCESS SO THAT DIRECT DISCHARGE DOES NOT OCCUR.
 - THE CONTRACTOR SHALL CHECK ALL EROSION AND SILTATION CONTROL DEVICES WEEKLY AND/OR WITHIN 24 HOURS OF STORM EVENT THAT PRECIPITATES 1/2 INCH OR GREATER AND REPAIR OR REPLACE THEM AS REQUIRED. SILT FENCES SHALL REMAIN IN PLACE UNTIL PERMANENT STABILIZATION OF DISTURBED AREAS IS COMPLETED.
 - THE REQUIREMENTS LISTED ON THIS DOCUMENT SHALL BE CONSIDERED MINIMUM REQUIREMENTS AND THE CONTRACTOR SHALL USE WHATEVER METHODS DEEMED NECESSARY TO PREVENT EROSION AND SILTATION AS MAY BE REQUIRED FROM THE PROJECT, AND APPROVED BY THE AUTHORITIES HAVING JURISDICTION.
 - THE CONTRACTOR SHALL CONTROL ALL DUST ORIGINATING ON THIS PROJECT BY WATERING OR OTHER METHODS AS APPROVED BY THE OWNER AND ENGINEER OF RECORD.
 - ALL PRACTICABLE AND NECESSARY EFFORT, INCLUDING BUT NOT LIMITED TO THE USE OF STAKED HAY BALES OR STAKED SILT SCREEN BARRIERS, SHALL BE TAKEN DURING CONSTRUCTION TO CONTROL AND PREVENT EROSION AND TRANSPORT OF SEDIMENT MATERIALS TO SURFACE WATER CONVEYANCE DITCHES, INLETS, SURFACE DRAINS, WETLANDS AND LAKE AREAS. THE CONTRACTOR SHALL BE RESPONSIBLE FOR ALL RESTORATION EFFORTS THAT MAY BE REQUIRED TO MITIGATE EROSION OR SEDIMENTATION EFFECTS OCCURRING DURING THE WORK.
 - TEMPORARY SILTATION CONTROL BARRIERS (E.G. SILT FENCE) SHALL BE INSTALLED WHERE EARTH DISTURBANCES ARE WITHIN 100 FEET OF SURFACE WATER CONVEYANCE SYSTEMS AND WETLANDS.
 - IT IS RECOMMENDED THAT THE CONTRACTOR MARK OUT THE LANDWARD SIDE OF WETLAND / BUFFERS TO PREVENT UNINTENTIONAL WETLAND BUFFER IMPACTS DURING CONSTRUCTION.
 - PERIODIC INSPECTION AND MAINTENANCE OF ALL SEDIMENT CONTROL STRUCTURES AND DEVICES MUST BE PROVIDED TO ENSURE INTENDED PURPOSE IS ACCOMPLISHED. THE CONTRACTOR SHALL BE CONTINUALLY RESPONSIBLE FOR ALL SEDIMENT LEAVING THE PROPERTY. SEDIMENT CONTROL MEASURES SHALL BE IN WORKING CONDITION AT THE END OF EACH WORKDAY.
 - ALL EROSION CONTROL DEVICES SHALL FOLLOW STANDARDS AND DETAILS IN THE CURRENT FLORIDA STORMWATER EROSION AND SEDIMENTATION CONTROL MANUAL.
 - ON SLOPES OR DITCHES WHICH ARE TOO STEEP FOR THE USE OF GRASSING, SUITABLE EROSION PROTECTION SHALL BE PROVIDED BY DITCH OR SLOPE PAVEMENT, ADEQUATE FOR PERMANENT PROTECTION. IN NO CASE WILL ANY AREA WHICH IS SUBJECT TO DETRIMENTAL EROSION BE ACCEPTABLE UNLESS SUCH PROTECTION IS PROVIDED.
 - CONTRACTOR SHALL IMPLEMENT THE CONSTRUCTION ENTRANCE POLLUTION PREVENTION FEATURES WHEREVER AN ENTRANCE TO THE SITE IS UTILIZED FOR CONSTRUCTION.



Revisions		
Date	Description	No.
07/19/23	CITY OF POMPANO BEACH DRC	1

Signature: MICHAEL CARR
PROFESSIONAL ENGINEER FL Lic. No. 72424

LANGAN
Langan Engineering and Environmental Services, Inc.
110 East Broward Boulevard, Suite 1500
Fort Lauderdale, FL 33301
T: 954.320.2100 F: 954.320.2101 www.langan.com
FL CERTIFICATE OF AUTHORIZATION NO. 00006601/LB8172/LB8198

Project: BLP - POMPANO BEACH

PARCEL ID: 4942-03-00-0036, -0038, -0043
CITY OF POMPANO BEACH
BROWARD COUNTY FLORIDA

Drawing Title: **SOIL EROSION & SEDIMENT CONTROL PLAN**

Project No.	Drawing No.
330119501	C-700

Date	Drawn By	Checked By
AUGUST 2023	NCM	MPC

LEGEND

	INLET PROTECTION
	SILT FENCE